

Art Guideline for XHP Journals

Updated November 29, 2023

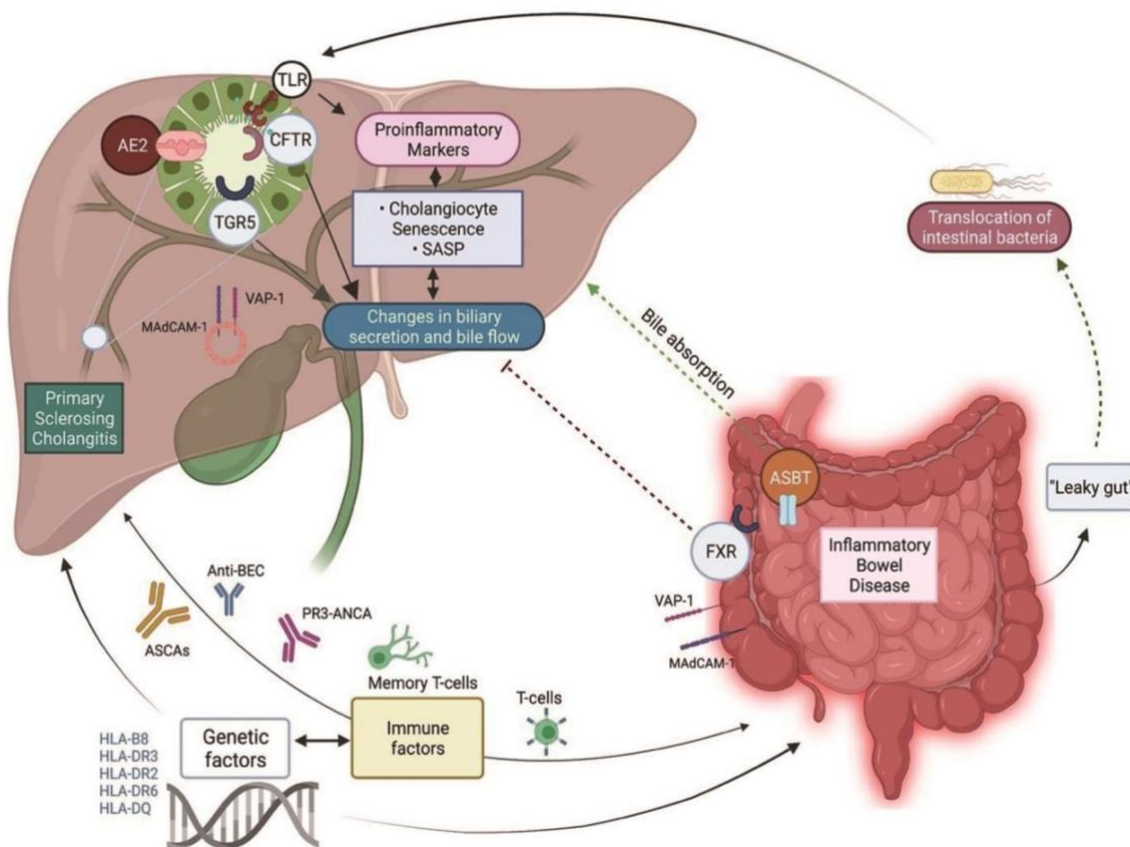
Graphical Abstract

A well-designed graphical abstract draws more attention to the article. The graphical abstracts are published with the online article and may be selected as cover art for the journal.

The graphical abstract should be submitted as a separate file through the online submission system. The image size should be a minimum of 13.2 cm × 17.6 cm (h × w, 3:4) and can be larger with the same proportions.

The image should be clear and high-quality, with a minimum resolution of 300 dpi (500 dpi is recommended). The preferred file types include JPG, TIFF, and PDF for submission, whereas an editable version, such as layered PSD, EPS, AI, PPT, or PDF, is needed for the publication process.

No additional text, table, outline, or synopsis should be included. The heading “Graphical Abstract” should not appear within the image.



Example from:

Da Cunha T, Vaziri H, Wu GY. Primary Sclerosing Cholangitis and Inflammatory Bowel Disease: A Review. *J Clin Transl Hepatol.* 2022;10(3):531-542. doi: 10.14218/JCTH.2021.00344.

Tables

Tables should provide data that is not presented in the text, to avoid redundancy.

Tables require a label (e.g., “Table 3”) and a brief descriptive title above the table. Place legends, footnotes, and other text below the table. Indicate each footnote in the table with a superscript lowercase letter. Abbreviations used in the table should be defined in a footnote in alphabetical order.

Tables should be included in the manuscript file immediately after the figure legends, not as separate files. Tables should be prepared using the Table function in Word (not submitted as embedded Excel/.xlsx or image files).

Tables should be formatted with the three-line table style. Tables can be prepared with a single column (8.6 cm) or double column (17.6) width.

Table 3. Clinical features of the patients and healthy control group

Item	Item	Item	Item
XXXX ^a	XXXX ^b	XXXX	XXXX
XXXX ^c	XXXX	XXXX ^d	XXXX
XXXX	XXXX	XXXX	XXXX ^e

Footnote ^{a,b,c,d,e}.

(Footnotes can be used in tables; marking with alphabetical superscript letters)

Figures

All figures must be cited in the main text of the article and be numbered using Arabic numerals in the order in which they are cited in the text.

Figure Legends

Figure legends must be typed on a separate page in the manuscript file. Each legend should begin with a single unifying title. The figures and their legends must be concise, comprehensive, and readily understandable without reference to the main text.

For micrographs, a scale bar within the figure is preferable to inclusion of the magnification in the legend. All symbols (e.g., asterisks, arrows) and abbreviations appearing in the figure should be defined in the legend.

For cell staining micrographs, the staining method must be described in the legend. Color distinctions also should be indicated in the legends, unless a definition has been added as an inset within the figure itself.

Photographs

All patient identifiers must be removed from photos and radiographic images, unless specific written permission has been obtained from the patient.

Electron micrographs

For electron micrographs, include scale markers in the image and indicate the type of stain used.

Line art and graphs

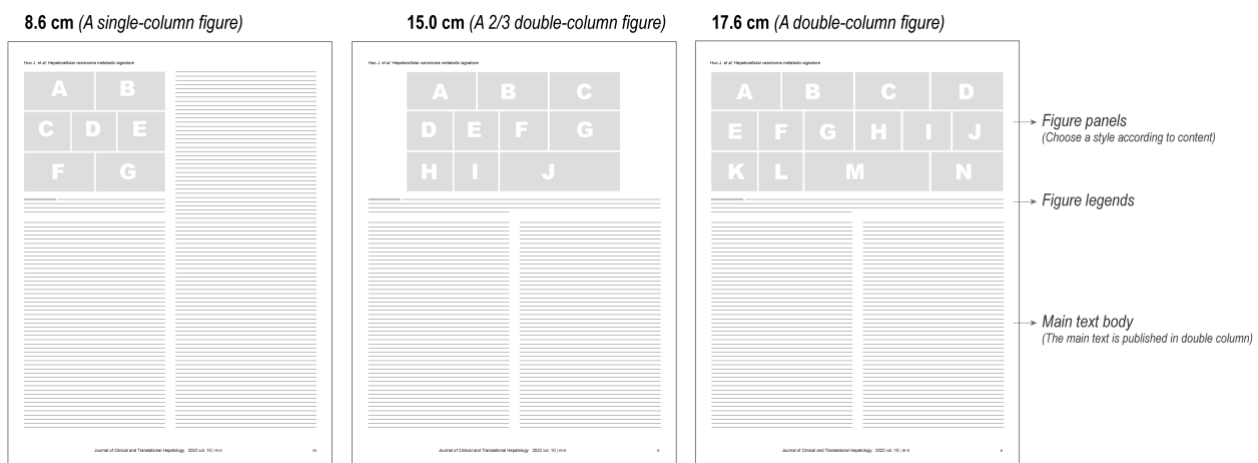
Ensure that lines and lettering are clearly visible and not faint. Check that all lines and lettering within figures are legible at the final print size. All lines should be at least 0.1 mm (0.3 pt) wide.

Gel electrophoresis labeling

Protein molecular weights or DNA marker sizes must be indicated on all relevant figure panels. If images from different parts of the same gel, or from different gels, fields, or exposures are grouped together, this must be explicitly noted within the figure's arrangement, such as through the use of dividing lines.

Dimensions

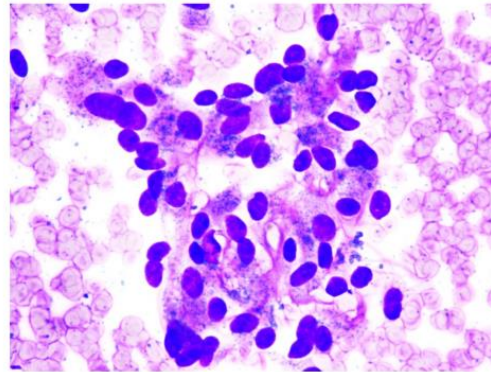
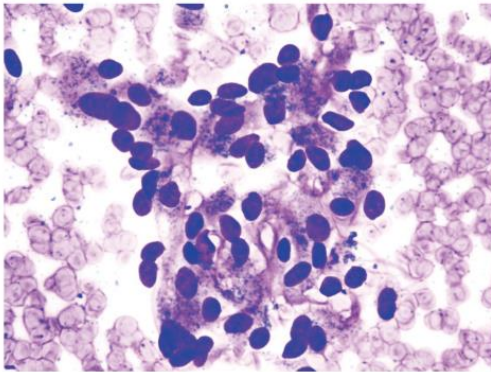
Choose one width from the following three sizes: single column (8.6 cm), 2/3 double column (15 cm), or double column (17.6 cm) according to the figure content. Please consider that figures will be printed and cannot be enlarged in print form, and therefore arrange them compactly and clearly.



Color

CMYK (print mode)

RGB (digital mode)



All figures with colour can be save as RGB mode, which will be automatically converted to CMYK if printed; the online figures will be displayed in RGB for better reading experience.

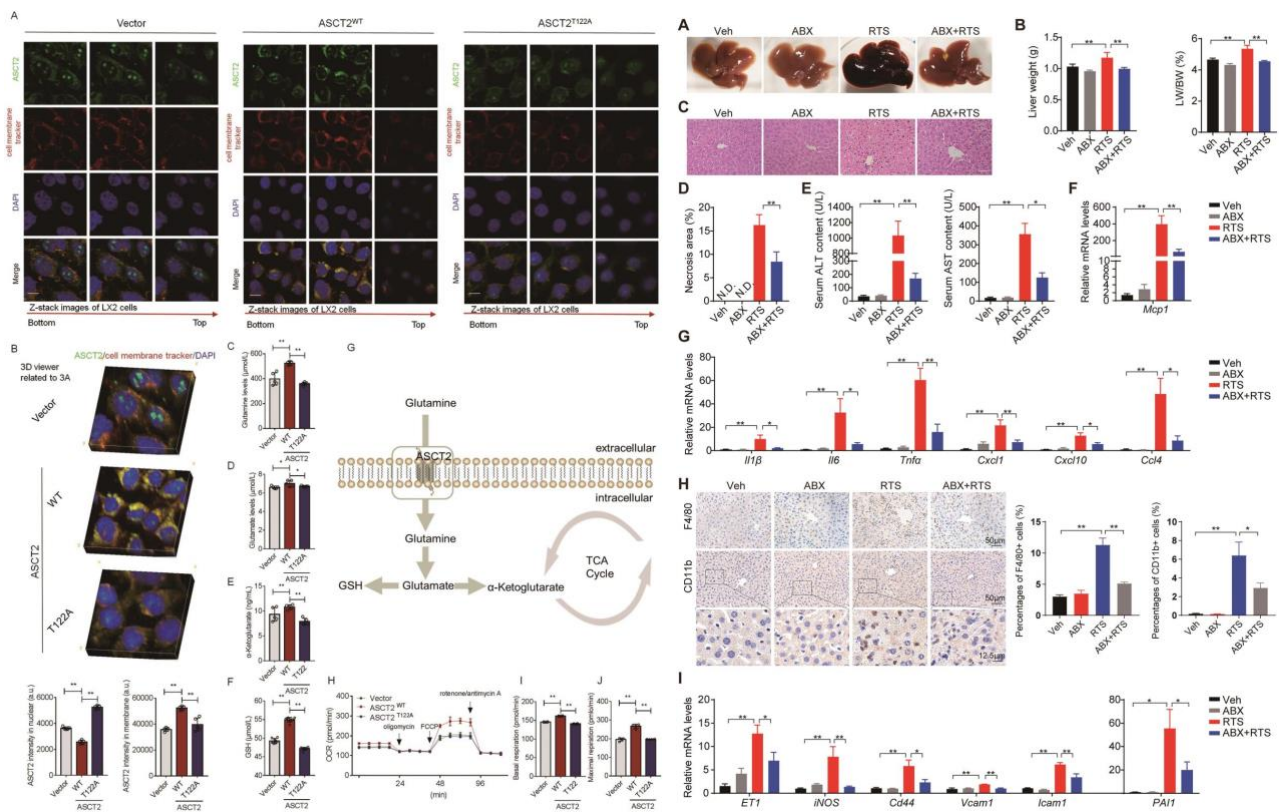
Color scheme

There is no mandatory requirement for the color scheme of the figures. The following three schemes (RGB) are preliminarily recommended for the author's consideration.

190	246	255	214	41	248	114
33	148	229	148	181	255	123
26	99	8	25	206	247	180

24	140	106	247	74	206	0
41	148	25	247	67	165	0
25	107	32	173	41	75	0

0	0	189	255	0	222	230
157	148	221	255	173	255	239
140	175	197	255	207	26	182

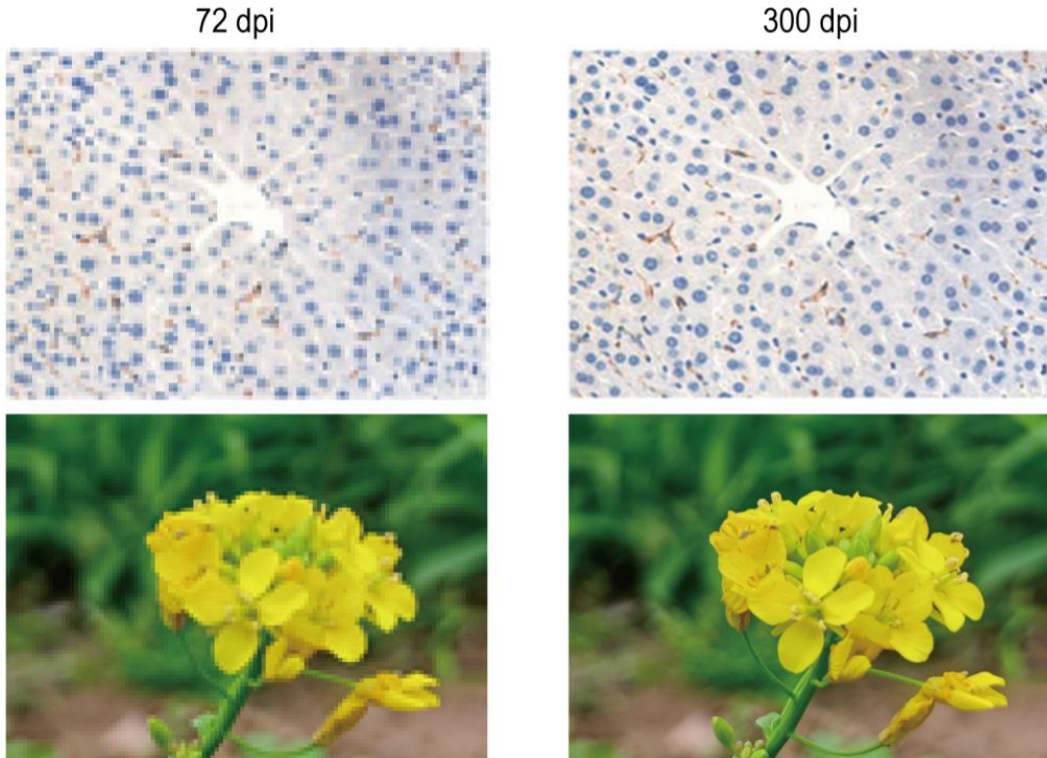


Example I

Example II

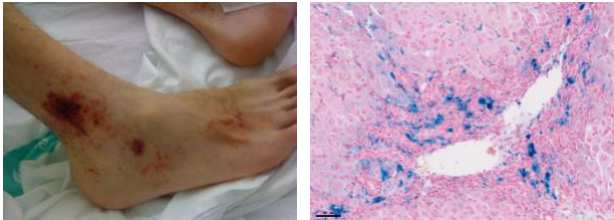
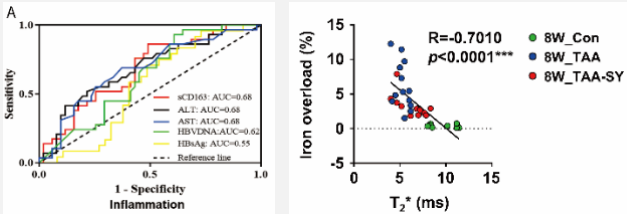
Resolution

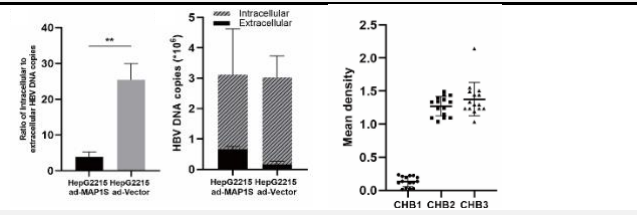
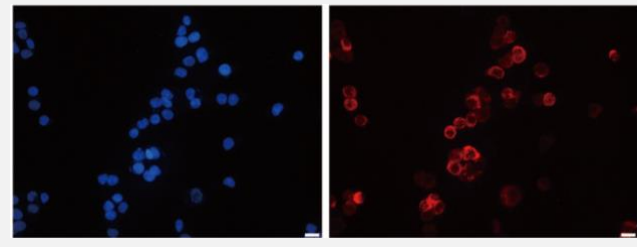
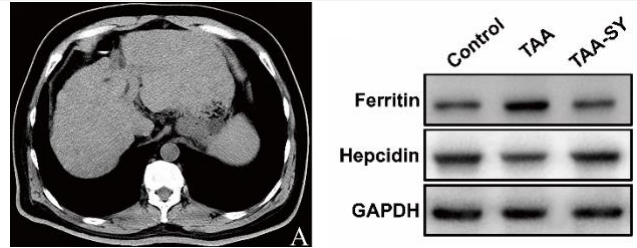
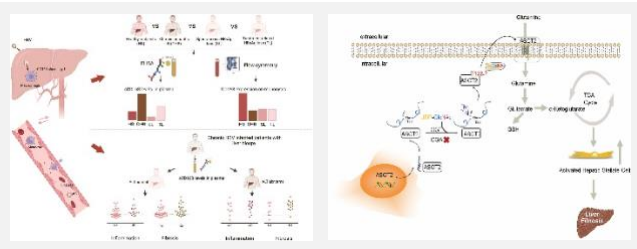
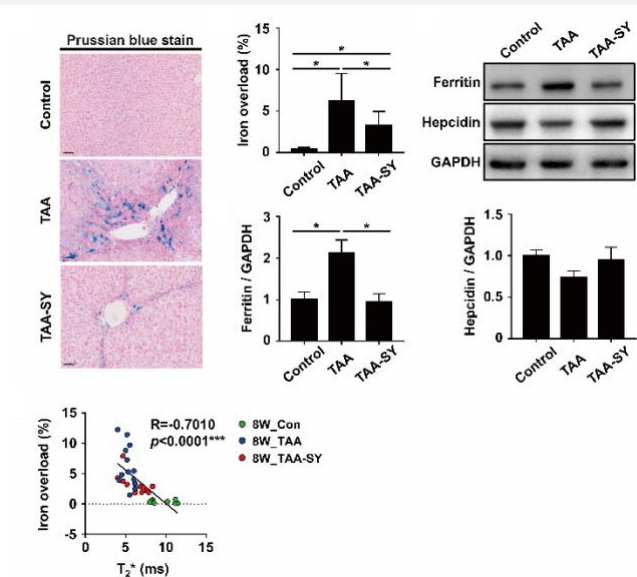
Artificially increasing the resolution of an image with photoshop or another artwork program will not improve its quality or definition.



Lower resolution makes the details of the same figures more difficult to read.

The following minimum resolutions must be guaranteed: **300 dpi** for photographic images, **1200 dpi** for line art, **600 dpi** for grayscale art, **500 dpi** for drawing art, and **500 dpi** for combined art consisting of any of these two types.

Categories	Examples	Preferred parameters [#]
Photographs		<p>>300 dpi *.tif</p>
Color line art		<p>>500 dpi *.tif *.pdf</p>

Categories	Examples	Preferred parameters#
Line art		1200 dpi *.tif *.pdf
Electron micrographs		>300 dpi *.tif
Grayscale art		>600 dpi *.tif *.pdf
Drawing art		>500 dpi *.tif *.pdf *.ai
Combined art		500 dpi *.tif *.pdf *.psd *.ai

The Lempel-Ziv-Welch (LZW) compression mode is recommended when exporting *.tif files to make figures no larger than 10 M.

Images

Figures can be submitted in JPG, TIFF, or PDF formats. The quality must be sufficient for peer review. For final publication, high-quality figures are required, along with a well-prepared and editable version, such as layered PSD, EPS, AI, Word, Excel, PPT, or PDF.

Composite figures can be submitted either as a single print-quality image, neatly labeled with lowercase letters (a, b, c, etc.) in bold font in the upper left corner of each panel, or as separate panels without labels (e.g., MS code_Figure 1a.tif,

MS code_Figure 1b.tif, etc.), corresponding to the detailed description in the figure legend. For JCTH, however, uppercase letters (A, B, C, etc.) are used for labeling.

It is recommended to submit well-arranged figures containing all panels, as this facilitates easier peer review. Figure titles or legends should not be included within the figure files. All color figures must be submitted in RGB mode. There will be no extra fees for publishing color figures.

Formatting Specifications

Figure files

While the Art editors may optimize image formats during the publishing process, the primary responsibility for ensuring image quality lies with the author. The resolution of an image serves merely as a reference parameter. All high-quality figures should be self-explanatory and remain clear even when enlarged. Authors should be aware that artificially enhancing the image's resolution can result in blurring.

File Requirements

The list below is an abbreviated summary of the figure specifications.

Items	Description
File formats	<i>For submission:</i> TIFF, JPG, or PDF format, clear to review; <i>For publication:</i> TIFF files with high-quality, and the corresponding editable files in PSD, EPS, AI, PDF or PPT format are required.
Dimensions	<i>Width:</i> single column 8.6 cm; 2/3 double column 15 cm; double column 17.6 cm. <i>Height:</i> less than 21 cm
Resolution	Photographs and color images: 300 dpi. Gel electrophoresis, radiographs, CT scans, and grayscale images: 600 dpi. Line art (purely black and white figures with no shades of gray): 1200 dpi. Figures combined with graphs and line art: 500 dpi.
Color mode	Grayscale (black and white) or RGB (color)
Font & size	Arial (preferred) OR Times New Roman, 8-12 pt (be consistent within your article)
Captions	Do not include any title or captions on figures
File size	Less than 10 M, save *.tif with Lempel–Ziv–Welch (LZW) compression mode